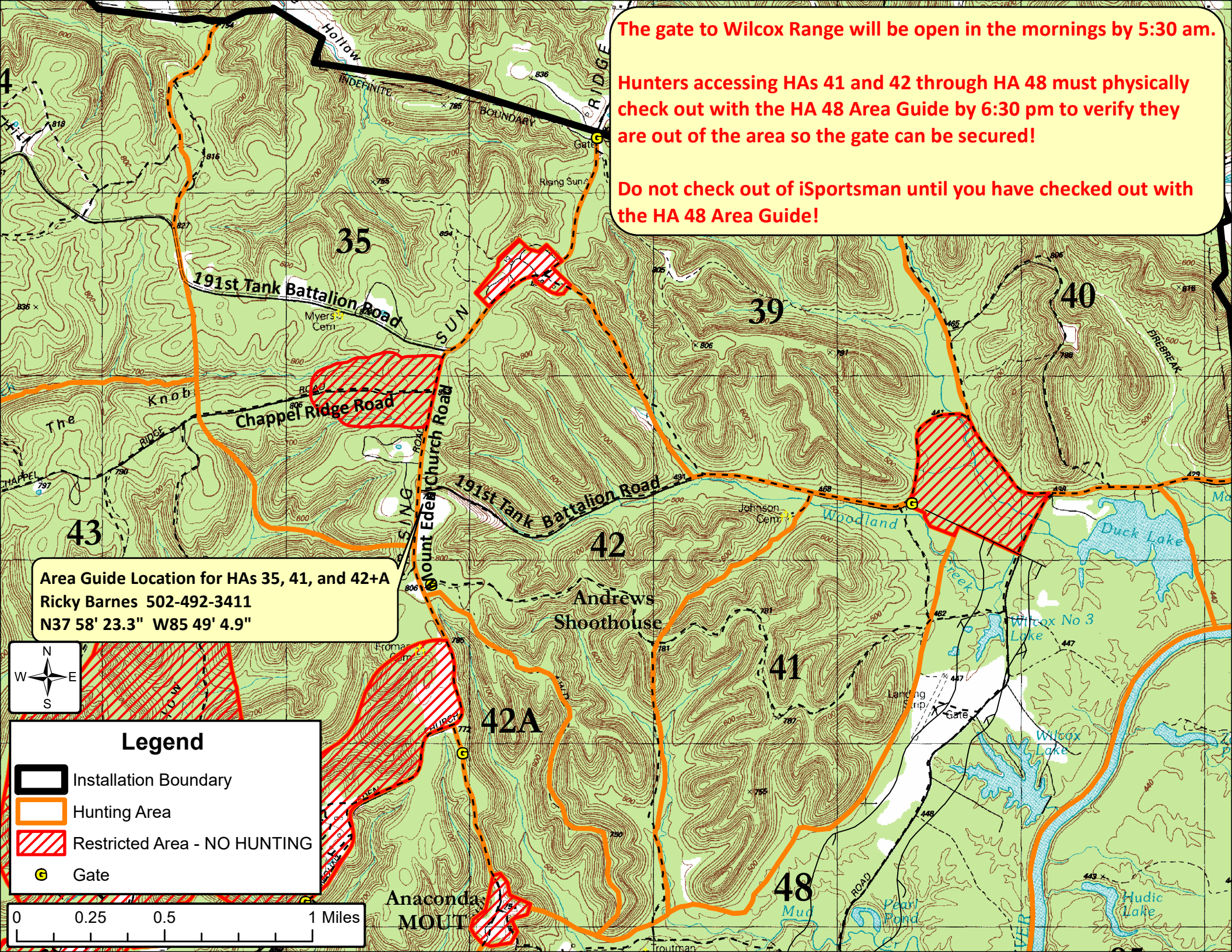


The gate to Wilcox Range will be open in the mornings by 5:30 am.

Hunters accessing HAs 41 and 42 through HA 48 must physically check out with the HA 48 Area Guide by 6:30 pm to verify they are out of the area so the gate can be secured!

Do not check out of iSportsman until you have checked out with the HA 48 Area Guide!



Area Guide Location for HAs 35, 41, and 42+A
Ricky Barnes 502-492-3411
N37 58' 23.3" W85 49' 4.9"



Legend

- Installation Boundary
- Hunting Area
- Restricted Area - NO HUNTING
- Gate

